



Welcome to Ludwigsburg University of Education

Pre-arrival Information Session Winter term 2026/27

Housekeeping Rules



Note! This session is being recorded.



Getting to know others is easier when you see them.
So please keep your camera on throughout the session.
Make sure to smile! 😊



Please keep your microphone muted when not speaking to help
eliminate background noise.



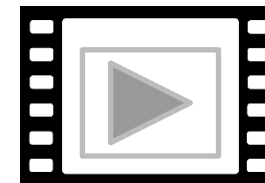
ASK QUESTIONS!

Outline

1. Ludwigsburg and Ludwigsburg University of Education
2. The International Office and Incoming Student Mobility Team
3. Student Introductions
4. Organisational Topics
 1. Housing
 2. Buddies
 3. Arrival
 4. Visa
 5. Health Insurance
 6. Bank Account
 7. SIM Card
 8. Semester Dates & Public Holidays
 9. Orientation Week
 10. Courses
 11. Teaching Placements
 12. Online Learning Agreement
 13. Semester fee
5. Outlook: Q&A Pre-Arrival Meeting & Next steps
6. Questions

Ludwigsburg

Ludwigsburg with approx. 94,000 inhabitants is situated 20 km north of **Stuttgart**, the capital of Baden-Württemberg, with about 630,000 inhabitants.



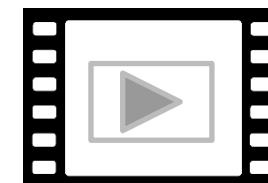
<https://youtu.be/hTkfqFr-cc?si=mKthGwFM8HCd90sL>



Ludwigsburg University of Education (LUE)



- ❖ Largest of the six Universities of Education in Baden-Württemberg
- ❖ approx. 5,600 students
- ❖ 3 faculties: Education and Social Sciences, Cultural and Natural Sciences, Special Needs Education
- ❖ 6 Bachelor Programs and 13 Master Programs



<https://www.youtube.com/watch?v=VhU1oFlxvLU>

What can you expect when studying in Germany?

Organizing and learning is done independently

10 courses on average
→ tasks, essays, exams



Strict requirements for written assignments
(citations, literature)

Lecturers are called by their last name

Incoming Student Mobility Team



Denise Wintrich

Coordinator Incoming Students

Email: incomings@ph-ludwigsburg.de

Phone: + 49 (0) 7141 140 2132

Room: 11.015



Marie Hering



Zoe Gorzolka



Sophie Eichler

Tutors Student Incoming Mobility

Email: incomings@ph-ludwigsburg.de

Room: 11.014

International Office Team



Dr. Nina Jäger
Director
International
Office



Minke Jakobi
Director &
Erasmus+
Institutional
Coordinator



Selina Sauer
Coordinator for
New Mobility
Formats



Moritz Jahraus
Coordinator
Outgoing
Students



Denise Wintrich
Coordinator
Incoming
Students



Ines Waigand
Project
Coordinator
BeQuPS



Charlotte Keefer
Project Coordinator
INVITE 2.0



Karolin Herbst
Team Support

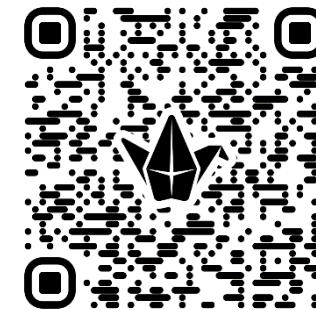
Student Introductions

We want to learn more about you! /



Where are you joining from?

Add a marker to the map by clicking on the pink plus-icon and mention your name and the city of your home university.



https://padlet.com/Denise_W/student-introductions-hlf4j04stzh0kv2

ORGANIZATIONAL QUESTIONS

WINTER TERM 2026/27

1. Housing - Student Village Ludwigsburg



© Studierendenwerk Stuttgart/ Kuhn

- Location: 3 minutes' walk to the university; S-Bahn stop in only 2 min. by foot; supermarket, bank, post office, pharmacy and doctors in max. 5 min. by foot
- **Single or double room in an apartment (shared apartment) together with other students (women and men)**
- There's a large kitchen with a dining area / living room.
- You share the bathroom and toilet with your flat mates.
- Washing machines and dryers are in the basement.
- All rooms are furnished with bed, closet, table and chair.
- **Common rooms are cleaned by all residents - no cleaning service!**
- Rent: Single Room € 2.010 / Double room € 1.412 per semester, includes electricity, water and heating
- Internet: € 9,50 per month
- Bed linen and duvet/pillows can be bought from the janitor (€ 65)

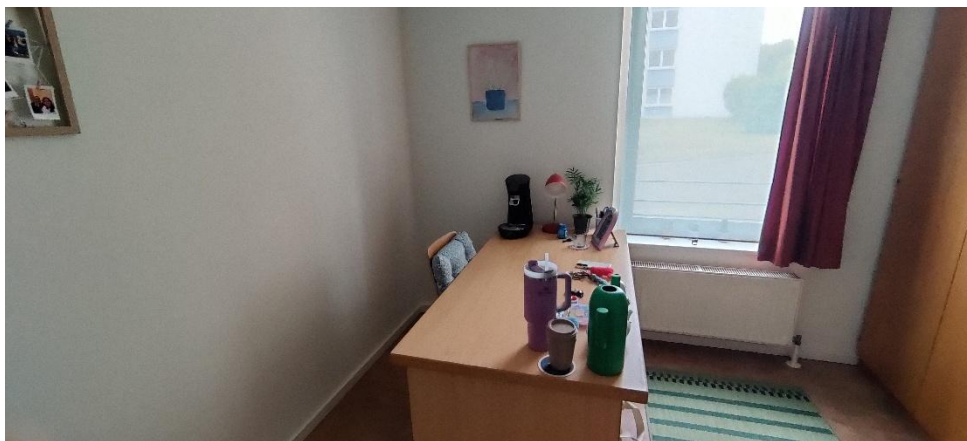
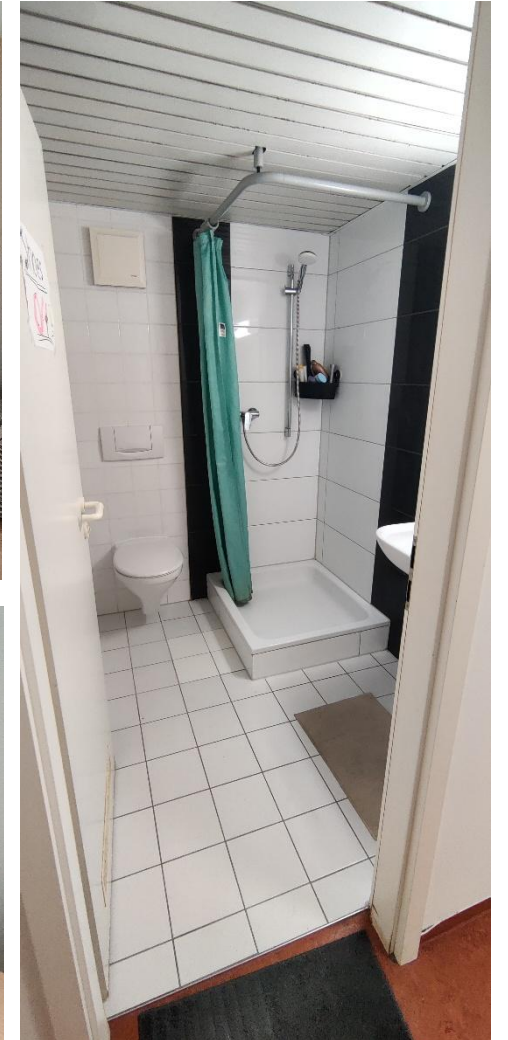
Important note:

- Rooms are currently blocked for you. You need to officially apply for a room with a link that we will send you in the next weeks. Contracts are made directly with the operator. LUE is not the owner or operator of the dormitory. Once you sign the contract, you are obliged to accept the room and pay the semester rent, even if it is only due in November.

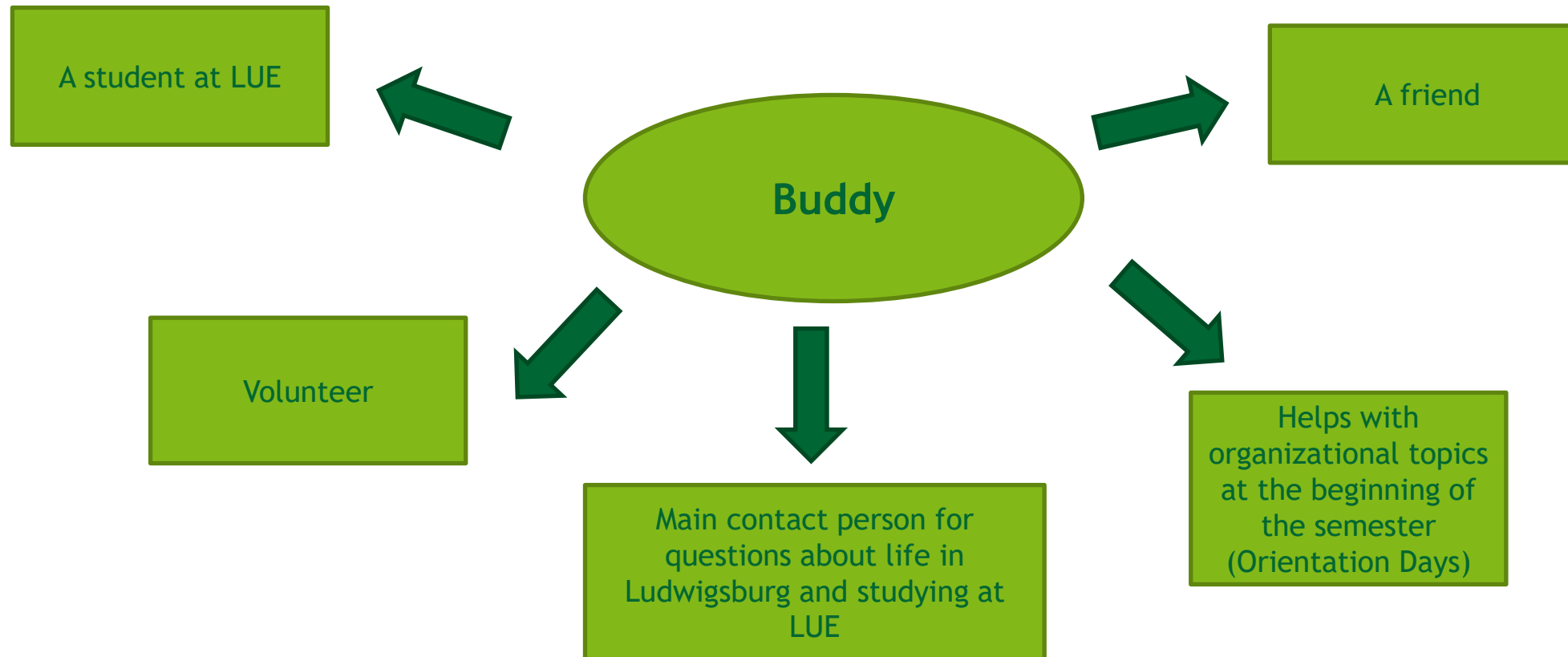
1. Housing / Unterkunft

Student Village / Studi-Dorf Ludwigsburg

Sample photos of a typical shared apartment



2. Buddies



We will forward you the contact of your buddy via email at the end of July / beginning of August.

3. Arrival

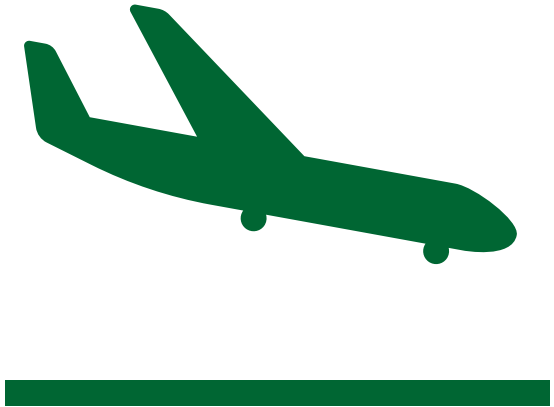
Move-in days are

**Friday, October 2nd from 9:00 am to 1:00 pm
and 3:30 pm to 5:00 pm**

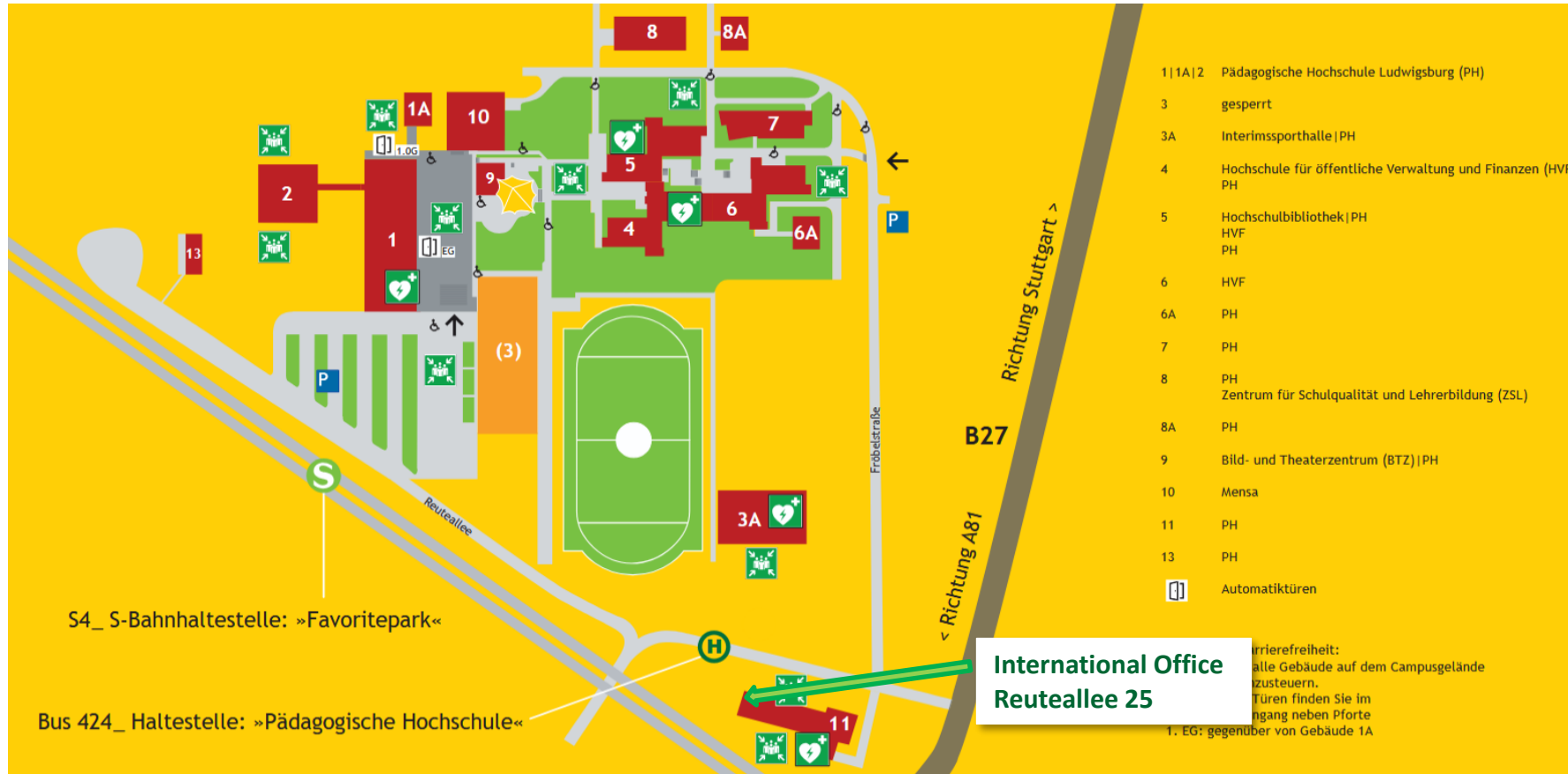
Monday, October 5th from 9:00 am to 3:00 pm

- Please tell your buddy at what time and place you will be arriving, so he/she can assist you with your arrival/move-in.
- Come (at best together with your buddy) to the International Office, room 11.015, to pick up your keys and bedding (if you ordered it in your application).
- **Arriving outside of the times listed above, is only possible if your buddy can pick up the key from us during the above-mentioned times and then hand it over to you upon your arrival.** If your buddy is not available, he or she may be able to help you to find another buddy who can pick up the key for you.
- Your buddy can also pick up the keys for you and meet you directly at the S-Bahn station, if you arrive by public transportation and have heavy luggage.

If your buddy cannot help you with your move-in, please get in touch with the International Office.



3. Arrival



S4_ S-Bahnhaltestelle: »Favoritepark«

Bus 424_ Haltestelle: »Pädagogische Hochschule«

International Office
Reuteallee 25

1. EG: gegenüber von Gebäude 1A

1 1A 2	Pädagogische Hochschule Ludwigsburg (PH)
3	gesperrt
3A	Interimssporthalle PH
4	Hochschule für öffentliche Verwaltung und Finanzen (HVF) PH
5	Hochschulbibliothek PH HVF PH
6	HVF
6A	PH
7	PH
8	PH Zentrum für Schulqualität und Lehrerbildung (ZSL)
8A	PH
9	Bild- und Theaterzentrum (BTZ) PH
10	Mensa
11	PH
13	PH
[Icon]	Automatiktüren

Barrierefreiheit:
alle Gebäude auf dem Campusgelände
zusteuern.
Türen finden Sie im
Eingang neben Pforte

1. EG: gegenüber von Gebäude 1A

Information on how to travel to “Favoritepark” by public transportation from Stuttgart or Frankfurt Airport or Stuttgart Main Station or how to arrive by car can be found in the information letter.

4. Visa / Passport / ID

Non-EU students:

- ❖ You need a **passport** that is valid for at least 6 months longer than the validity period of your visa. Remember to apply for this early in order to have enough time to apply for the visa. It takes at least 4 to 5 weeks (sometimes up to 12 weeks) to obtain the visa!
- ❖ A **valid student entry visa** is necessary for non-EU students. Please apply for this in good time at the German embassy/consulate in your home country. If having health insurance for your time in Germany is a criterion for your visa, please feel free to contact us at incomings@ph-ludwigsburg.de and we will be happy to assist you.
- ❖ Exception: citizens from the USA, Australia, Japan, Canada, Israel, South Korea, New Zealand and Great Britain can enter Germany with a tourist visa and **apply for their residence permit** after their arrival in Ludwigsburg. We will assist you with that. The tourist visa is valid for up to 90 days after the entry. However, you can also apply for a student visa directly at the embassy in your home country.

4. Visa / Passport /ID

- ❖ **Ukrainians** with a biometric passport who were in Ukraine shortly before or on 24 February 2022 have been able to enter Germany without a visa in recent years. They can also apply for their residence permit here in Ludwigsburg. As the entry requirements for Ukrainians may change at short notice, we recommend that you regularly check the currently valid entry regulations: https://www.germany4ukraine.de/EN/einreise-aufenthalt-und-rueckkehr/einreise-aus-der-ukraine-nach-deutschland/seite_node.html
- When applying for a **student visa** at the German embassy in your home country or for a **residence permit** for study purposes in Germany, **proof of financial means is required**. You must demonstrate that you have 992 euros per month available for each month for which you are applying for a visa or residence permit. Proof of financial means can be a scholarship confirmation or a blocked account confirmation: <https://www.germany-visa.org/banking-germany/blocked-account-for-foreign-students-in-germany/>

EU students:

- ❖ For EU citizens an **Identification Card (ID)** is sufficient. It has to be valid until the end of the stay.

5. Health Insurance

Adequate health insurance cover is a prerequisite for enrolment at Ludwigsburg University of Education.

For EU citizens:

- ❖ A blue **EHIC card** for health insurance, valid at least until the end of the semester or departure from Germany.

For Turkish citizens:

- ❖ The form A/T 11 Türk-Alman Sosyal Güvenlik Sözleşmesi, which you can get from your Turkish health insurance in order to cover health insurance in Germany.

For Serbian citizens:

- ❖ Form 111 SRB which you can get from your Serbian health insurance in order to cover health insurance in Germany.

For non-EU citizens:

- ❖ We recommend a **travel health insurance** for the arrival and the first days in Germany.
- ❖ After that you have to get a **student health insurance here in Germany**. This is a requirement for enrollment! It costs about 900 Euro per semester and includes everything (also e.g. dental prosthesis, hospitalization, free choice of doctor etc.). We will arrange an information meeting with health insurance providers during the orientation week, during which you can take out the insurance.
- ❖ You can also take out private health insurance. This must be valid for the entire semester in the entire Schengen area and cover at least 30.000 Euro.

6. Bank Account

- **If you are a student coming from outside the eurozone:** it is advisable to have a German (or another European) bank account → to avoid banking fees
- **If you receive a scholarship from Ludwigsburg University of Education:** you absolutely need a German bank account. Your scholarship can only be paid into this account
- You can open a bank account with an online Bank, e.g. N26.
 - **To open an account, you need:** German SIM card, a valid passport from a supported country, rental agreement for the dorm room in Ludwigsburg, your German address
 - Documents to be submitted later: German tax identification number (you will receive this by mail after registering with the city of Ludwigsburg), Certificate of enrollment
- If opening an account with an online bank is not an option for you, please feel free to contact us. We can help you schedule an appointment at a physical bank to open an account.
- However, given the significantly faster processing times and minimal administrative effort involved, we highly recommend opening an account with an online bank.

→ **If you receive a scholarship from LUE, please send us your account details (name, IBAN) by email to incomings@ph-ludwigsburg.de, after opening your account!**

7. SIM Card

- Provider of SIM cards in Germany are for example ALDI TALK
 - A starter kit can be ordered online or purchased at an Aldi
 - It usually costs 9.99 euros and typically comes with some starting credit
- Alternatively, you can purchase an eSIM before your arrival in Germany
 - This allows you to be reachable immediately upon arrival and use mobile internet
 - There are various providers for eSIMs: e.g. fraenk, Saily, airalo

→ We recommend that you obtain a SIM card and open a bank account before/immediately after arriving in Germany to ensure that your scholarship funds are disbursed quickly.

8. Semester Dates

Mandatory arrival days: **October 2 (Friday) & October 5 (Monday)**

Mandatory orientation programme for international students: **October 6 - 16, 2026**

Duration of the semester: **October 1, 2026 - March 31, 2027**

Lecture period: **October 19, 2026 - January 29, 2027**

Christmas break: **December 23, 2026 - January 6, 2027**

Examination weeks: **February 1, 2027 - February 12, 2027**

8. Public Holidays

Public holidays in Baden-Württemberg

University and all stores closed!

German Unity Day:	October 03, 2026
All Saints' Day:	November 01, 2026
Christmas Day:	December 25, 2026
Boxing Day:	December 26, 2026
New Year's Day:	January 01, 2027
Epiphany:	January 06, 2027

9. Orientation Days

October 6-16, 2026

- ❖ Completion of all administrative formalities:
 - enrollment at the university
 - health insurance
 - opening a bank account (if applicable)
 - registering in the town of Ludwigsburg
 - application for the residence permit
 - etc.
- ❖ Getting to know the other international students and buddies
- ❖ Explore the university and the surroundings
- ❖ Excursions, e.g. to the Residential Palace of Ludwigsburg

More information will follow shortly before arrival.

10. Courses: Free choice of courses from the entire course catalogue

General information:

- ❖ The majority of the courses is designed for future teachers
- ❖ Exchange students can choose from the entire course catalogue and are not restricted to a specific faculty
- ❖ Lecturers are flexible with ECTS and grades / certificates of participation
- ❖ We offer (free) German Language Courses: 4 levels / 4 hours per week/ 6 ECTS - mandatory for international students whose mother tongue is not German
- ❖ You can take one more language course (max. 2 language courses)
- ❖ School Practice (Internship) is possible: 2 weeks full-time = 3 ECTS, 2 days per week throughout the entire lecture period (30 days) = 10 ECTS
- ❖ We expect you to study full-time (minimum 20 ECTS); expectations of home university and scholarship have to be observed



Free choice of courses

Courses for the winter semester are not yet published.

- ❖ Course catalogue of the previous winter semester:
<https://lsf.ph-ludwigsburg.de/qisserverlb/rds?state=wtree&search=1&category=veranstaltung.browse&navigationPosition=lectures%2Clectureindex&breadcrumb=lectureindex&topitem=lectures&subitem=lectureindex>
- ❖ List of courses taught in English:
<https://lsf.ph-ludwigsburg.de/qisserverlb/rds?state=wtree&search=1&trex=step&root120251=161891%7C163218&P.vx=kurz>
Or: https://www.ph-ludwigsburg.de/fileadmin/phlb/international/Incomings/List_of_courses_taught_in_English.pdf
- ❖ Language courses:
<https://lsf.ph-ludwigsburg.de/qisserverlb/rds?state=wtree&search=1&trex=step&root120252=166654%7C169690&P.vx=kurz>

Criteria to consider when choosing your courses:

- ❖ You can choose from the entire range of studies (except for INEMA MBA Programme)
- ❖ Participation in one **German class for Visiting Students** (Deutsch für Gaststudierende/ DaF) is mandatory for international students whose mother tongue is not German (there are 4 levels and you get 6 ECTS)
- ❖ Maximum one other **language course**
- ❖ We expect that you **study full-time** (at least 20 ECTS per semester)
- ❖ We suggest to have **20-30 ECTS**, but you have to check the expectations of your home university and scholarship, if there are any



Course Selection

The courses for the winter semester will be online on August 10.

We will send you an email with information about how the course registration works technically and your log-in credentials.

There are 2 registration periods: 10.08. - 03.09.26 and 05.09. - 15.10.26.

Many courses have limits with regards to participants. We suggest to register during the first registration period. If you are not accepted to a course, try it again in the 2nd period. If you are still rejected, you can write an email to the lecturer or talk to him in person when the first session takes place. Usually, they are very flexible and accept exchange students to their courses.

Discuss your needs (ECTS, grade or certificate of participation) with your lecturers at the beginning. They are usually very flexible to the needs of our exchange students and can offer individual solutions.



Online meetings with our tutors to ask questions about the courses and to discuss your schedule will be offered.



11. Teaching Placement (Internship)

- ❖ Usually 2 weeks full-time during lecture periods
- ❖ Observing lessons and teaching some hours in the second week
- ❖ School types: Grundschule (primary school), Gesamtschule (comprehensive school), Realschule (secondary school), Sonderschule (special needs school)
- ❖ Normally, the school is here in the region, but travelling there by public transportation is likely necessary
- ❖ Classroom language is German, teaching placements in English are mainly possible in the subject English at secondary schools (others upon consultation), internships at primary schools and special needs schools are only possible when you have German language skills
- ❖ 3 ECTS
- ❖ For a school internship, you need a **police clearance certificate**. You need to apply for it in your home country before your stay and bring it with you. In addition, you must be **vaccinated against measles or be immune** to it (proof required).

12. Online Learning Agreement

- ❖ Only relevant for Erasmus+ students
- ❖ Please send them to us before your arrival (online platform)
- ❖ Changes can be made up to 5 weeks after the courses have started

- ❖ **Instructions how to complete the OLA** (Online Learning Agreement) can be found on: <https://www.ph-ludwigsburg.de/en/international/international-exchange-students/online-learning-agreement-ola>

13. Semester fee

- Social contribution to the Studierendenwerk (local student services organisation) for running the mensas, cafeterias, advice services.
- NO TUITION FEE
- It has to be paid every semester by every student
- 96,50 Euro for exchange students from partner universities
- 199,50 Euro for all other students (96,50 Euro + administrative fees)

Options to pay:

recommended

- Bank transfer before arrival from your bank account at home (Euro countries)
- Bank transfer before or shortly after your arrival from your new German bank account (e.g., [N26](#)) to avoid banking fees (see information letter)
- Transfer after opening a bank account at Sparkasse in Ludwigsburg. You bring the amount in cash to the appointment at the bank, put it on your account, and arrange the bank transfer.

Details to arrange the bank transfer will be send via email.



Virtual pre-arrival Q&A Meeting at the beginning of September

We will discuss:

- Arrival day
- Orientation Programme
- Questions

Invitation will follow by email.

Next steps

Now:

- ❖ Check the validity of your passport/ ID
- ❖ Take care of your visa, if necessary
- ❖ Complete your Learning Agreement, if not already done (Erasmus+)

In the next weeks:

- ❖ Apply for your room at the student residence with the link that will receive from us by email
- ❖ Register for your courses and create your schedule as soon as the registration is open (August 10)
- ❖ Open a German bank account (mandatory if you receive a scholarship from us)
- ❖ Transfer the semester fee (instructions will follow by email)



**DO YOU HAVE ANY
QUESTIONS?**

**THANK YOU FOR YOUR
PARTICIPATION!//**

WINTER TERM 2026/27